

# KERNEL FOR SHAREPOINT SERVER

*Competent solution for Sophisticated Server*

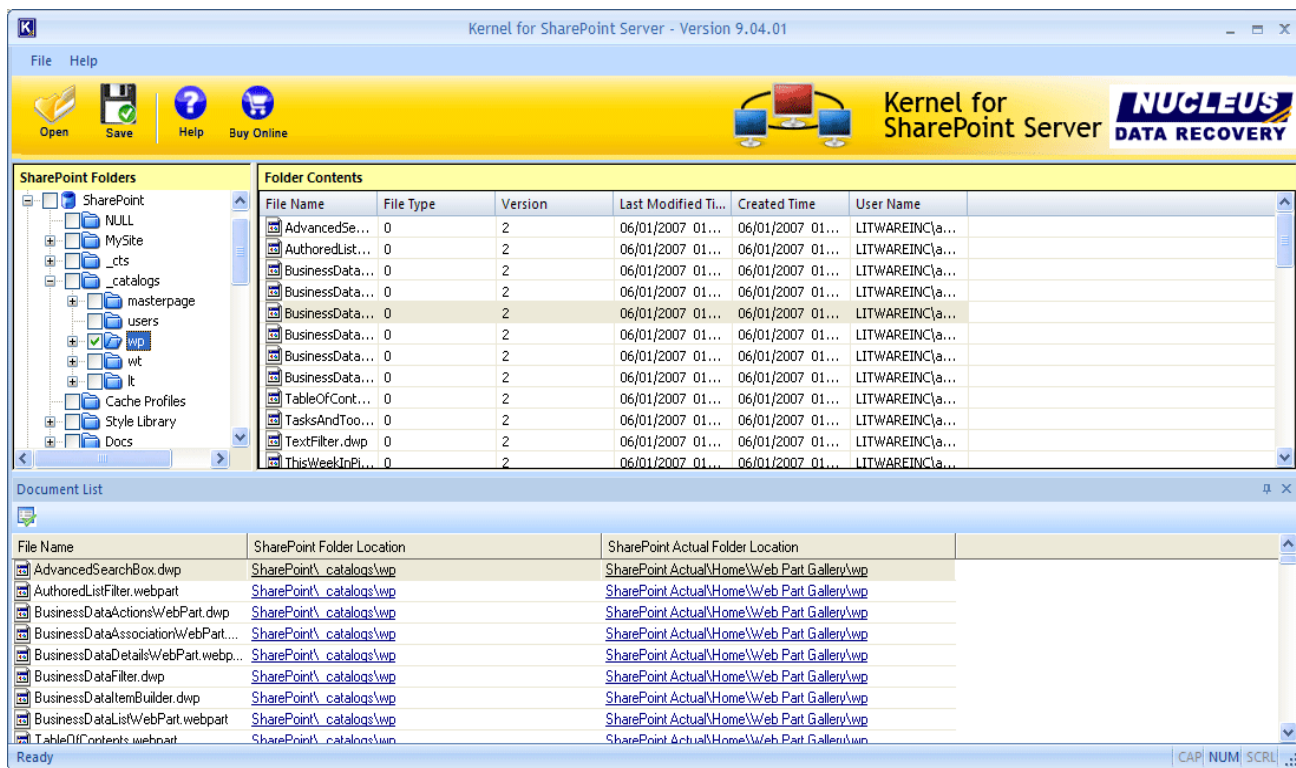
## OVERVIEW

Enterprises that rely on MS SharePoint server for making data sharing and work coordination easy and secure may face a cumbersome situation at the time of SharePoint Database corruption or SharePoint Server downtime. Since MS SharePoint Server is considered as a sophisticated server, solution for dealing with corruption issues should also be advanced in terms of efficiency. Advance recovery algorithms and ease of use is what Kernel for SharePoint Server provides the SharePoint administrators with.

The most important issue that Kernel for SharePoint Server can sort out along with efficient recovery is maintenance of data integrity and security during and after the recovery process. Kernel for SharePoint Server is enterprise level solution for recovering data from sophisticated SharePoint database. SharePoint Server administrators, who are finding this situation quite tough to handle, may entrust their worries to Kernel for SharePoint Server and can continue with the regular work flow in no matter of time.

## BENEFITS: AT A GLANCE

- Successful recovery even in cases where MS SharePoint Server is down.
- Provides the SharePoint administrator with multiple recovery modes and database connectivity options to perform recovery according to the corruption type and intensity.
- Enables enterprises to continue with the normal work flow immediately after recovery and restoration process.
- Cost effective and least time consuming solution for dealing with SharePoint (MDF) database corruption and SharePoint Server Downtime issues.



Kernel for SharePoint Server recovers all folders from the SharePoint (MDF) database and displays them at the left panel. A list of path location containing SharePoint and SharePoint Actual folder location is generated and displayed at the bottom of the screen

## Exclusive Options to Make Recovery More Easy and Accurate

**Raw File Mode:** When MDF database is corrupt, Raw mode is used. In this recovery mode, tables are recovered and restored in a newly built database.

**Live SQL Instance Mode:** In cases where MS SharePoint Server is down, Live SQL Instance Mode is used. In this mode documents are extracted from the database and uploaded in a new account created on MS SharePoint Server.

**Connecting through UDL file:** Kernel for SharePoint Server helps to perform quick recovery of files by allowing to get connected with the MS SQL Server through UDL (Universal Data Link) file..

## **KEY FEATURES**

- Time-effective and accurate recovery from corrupt MDF database with extraction of all files, folders and documents from it.
- Two recovery modes: Raw File and Live SQL Instance recovery modes are available to perform recovery according to the corruption type.
- Easy saving of recovered files that are further copied to a new database, which is configured at SharePoint Server.
- Simplified Report creation and saving.
- Free evaluation version to analyze the features and capabilities.
- Efficient in maintaining data integrity and security even in the situation of database corruption.

## **SYSTEM REQUIREMENTS**

### **System Requirements**

Pentium Class Processor  
64 MB RAM (128 recommended)  
10 MB of Disk Space for Software installation

### **Supported Platforms**

Windows 2000, XP, Vista and Windows Server 2003

### **Supported MS SQL Servers**

MS SQL Server 2000, 2005 and 2008

### **Supported MS SharePoint Servers**

Microsoft Office SharePoint Server 2007



SUPPORT: +91-9818725861, 1-866-348-7872 (Toll Free for USA/CANADA)

You can also email us about your queries at; [sales@nucleustechnologies.com](mailto:sales@nucleustechnologies.com) for Sales, [support@nucleustechnologies.com](mailto:support@nucleustechnologies.com) for Support, [contact@nucleustechnologies.com](mailto:contact@nucleustechnologies.com) for General Queries

Copyright **Nucleus Data Recovery.com Private Limited**